



the **Natura**
collection

the **Natura** collection

Terrazzo & Marble is very excited to introduce the Natura Collection.

Nature and technology team up to produce unique results with these beautiful slabs. Patterns and finishes can be tailored thanks to the wide range of materials available and the use of innovative production techniques.

The Natura Collection utilizes digital technology to etch unique designs into the stone. This can be done with lasers, water jets or other techniques depending on the stone and design. Designs can be done on over 500 different types of stones, making the possibilities endless

Lead times are roughly 8-10 weeks.

For any custom designs & patterns, there is a 10 slab minimum order.



Ali Design



Arabesco Design

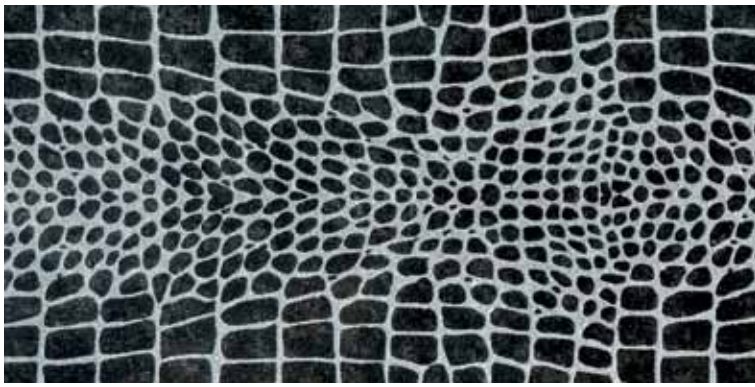


Avata Design



Contatto Design





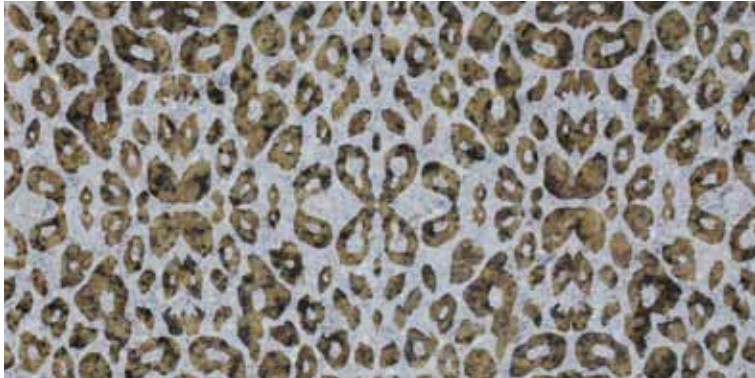
Croco Design

P S3



Forest Design

P S3



Leopard Design

P S3



Linea Design

P S3



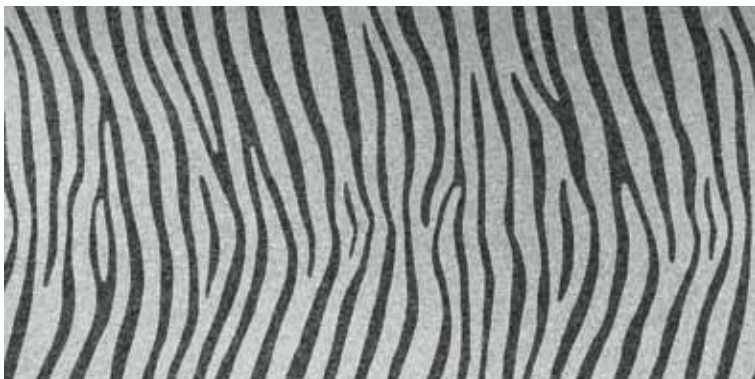
Maxi Flora Design

P S3



Papilo Design

P S3



Savanna Design

P S3



Zebra Design

P S3

*The scale of the patterns has been reduced for these images. The actual pattern size is larger, please contact your sales rep for more details.

SO = Special Order Sizes are available for all colors & patterns (Please call for availability)

the **Natura** collection

Legend

Finishes: **P** = Polished **M** = Matte **SP** = Semi Polished

Slab: **S3** = 3cm Slab **S2** = 2cm Slab **SO** = Special Order Sizes are available for all colors & patterns (Please call for availability)

This legend is intended for general information use only. Tile thickness and exact dimensions vary by material. Contact T&M for exact sizes & formats before ordering. Finishes and formats not listed may be available by special order.

For more information on The Natura Collection, please contact your local T&M Sales Representative at 877.TM.SLABS or visit our website at www.tmsupply.com.



facebook.com/TerrazzoMarble

